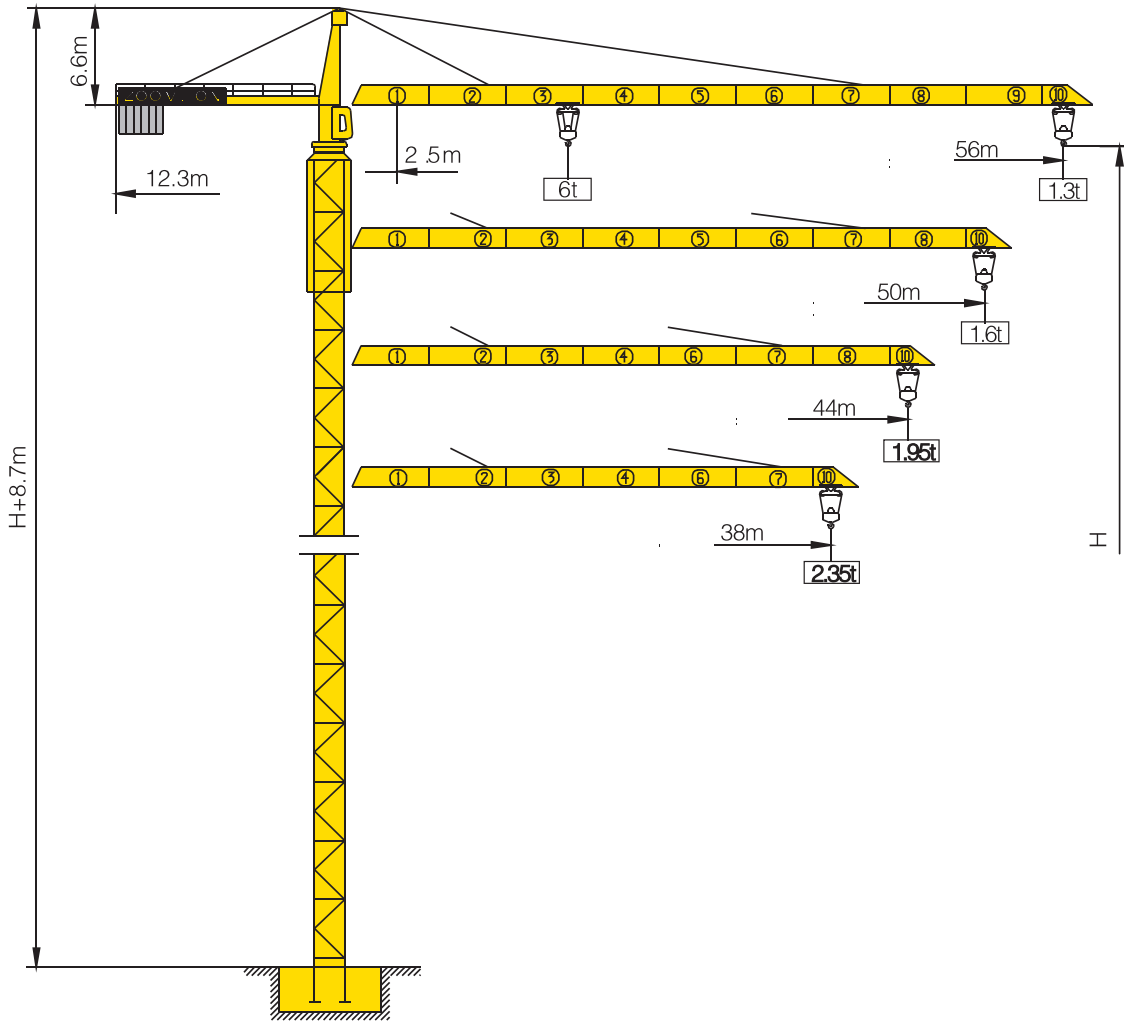


TC5613-6



Counter-jib ballast

			(Kg)	PHZ2250	PHZ1800	PHZ1300
55m	12.3m	15300	6	1	0	
50m	12.3m	13500	6	0	0	
44m	12.3m	11250	5	0	0	
38m	12.3m	9850	3	1	1	

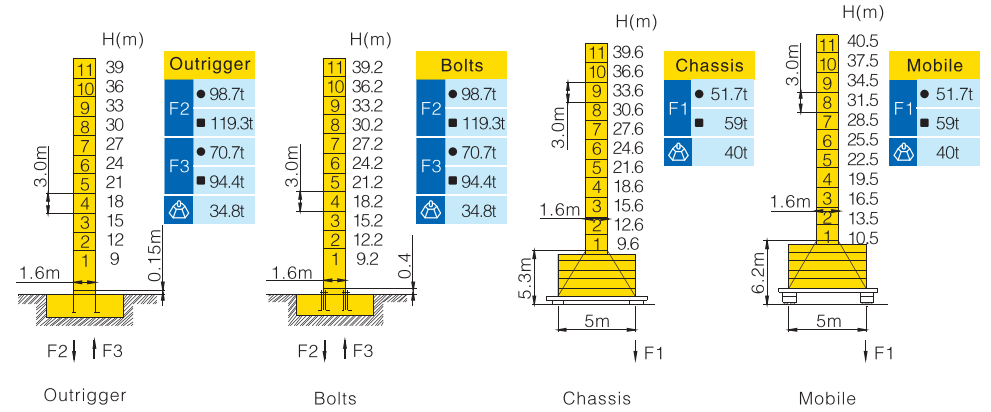
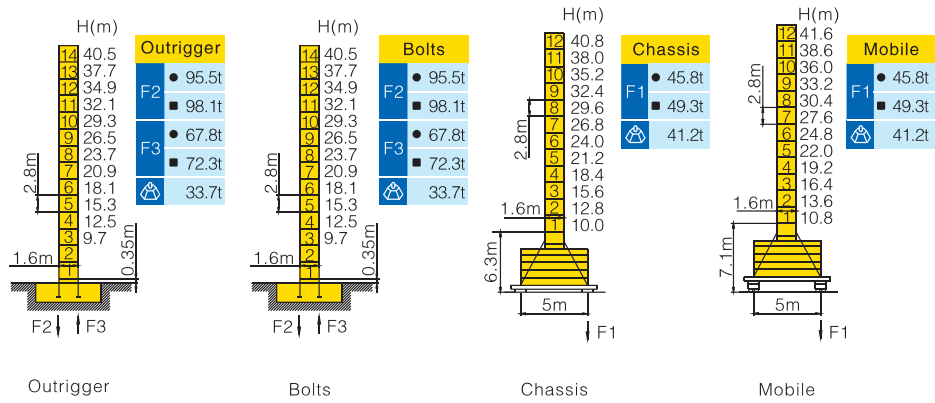
Working Height(m) @ Wall-tie Location(m)

Model Detail	Mast Code	Wall-tie #1	Wall-tie #2	Wall-tie #3	Wall-tie #4	Wall-tie #5	Wall-tie #6	Wall-tie #7	Wall-tie #8	Wall-tie #9
TC5613-6	EQ7	68.5 @ 31	93.7 @ 56.2	116.1 @ 81.4	141.3 @ 106.6	163.7 @ 131.8	183.3 @ 154.2	202.9 @ 173.8	220 @ 193.4	—
TC5613-6F	L46A1	63 @ 29	87 @ 53	108 @ 77	129 @ 98	150 @ 119	171 @ 140	192 @ 161	210 @ 182	219 @ 200

Masts Reactions

TC5613-6

TC5613-6F

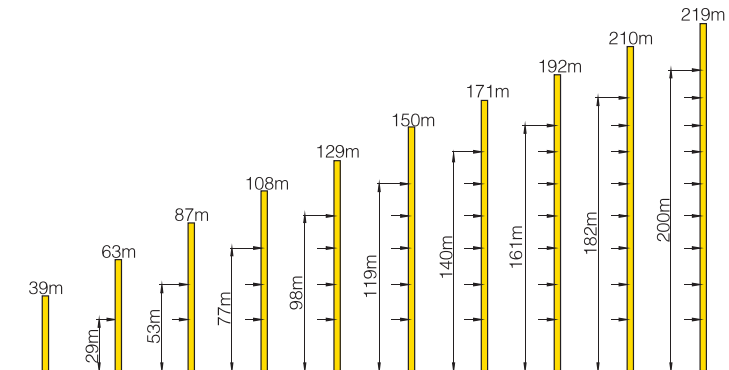
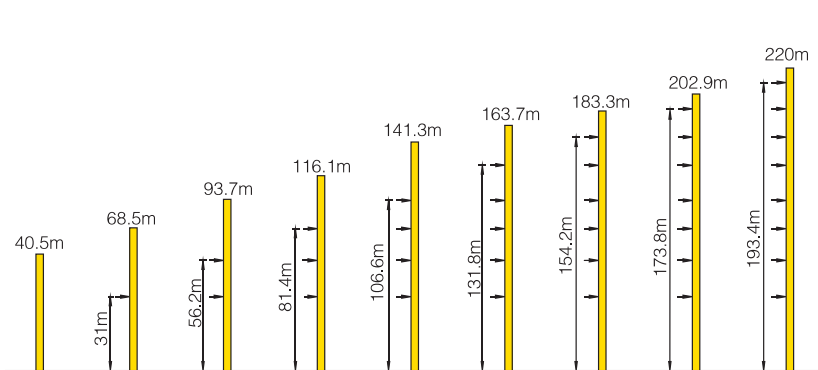


● Reactions in service ■ Reactions out of service
 ⊕ Without load and ballast with longest jib and maximum height
 ⊕ For more erecting solutions, consult us!

Anchorage


TC5613-6

TC5613-6F










TC5613-6

Load diagrams

		Max.Capacity m/t	17	20	23	26	29	32	35	38	41	44	47	50	53	56	
56m (R=57.03)	⌋	2.5-29.6m 3t	3.00					2.73	2.44	2.20	1.99	1.82	1.66	1.53	1.41	1.30	
	⌋⌋	2.5-16.2m 6t	5.70	4.71	4.00	3.45	3.02	2.67	2.38	2.14	1.93	1.76	1.60	1.47	1.35	1.24	
50m (R=51.03)	⌋	2.5-29.9m 3t	3.00					2.84	2.55	2.30	2.08	1.90	1.74	1.6			
	⌋⌋	2.5-16.8m 6t	5.92	4.90	4.16	3.59	3.14	2.78	2.49	2.24	2.02	1.84	1.68	1.54			
44m (R=45.03)	⌋	2.5-31.2m 3t	3.00					2.91	2.61	2.35	2.14	1.95					
	⌋⌋	2.5-17.1m 6t	6.00	5.01	4.26	3.68	3.22	2.85	2.55	2.29	2.08	1.89					
38m (R=39.03)	⌋	2.5-31.2m 3t	3.00					2.91	2.61	2.35							
	⌋⌋	2.5-17.1m 6t	6.00	5.01	4.26	3.68	3.22	2.85	2.55	2.29							

Mechanisms

		Hoisting		QS680D	
	Slewing		HPW40B.100		
	0~0.8 r/min	2×4 kW	I	♭	
	Trolleying		BE33E		
	50/25 m/min	3.3/2.2 kW	II	♭♭	
	Travelling		ZA52-D ZC52-D		
	0~25 m/min	2×5.2 kW	III	♭	
				440m Ⓞ (6 layers) ⓄConsult us If overtop	
		380V(+10%~10%) 50Hz		35.3+2 × 5.2 kW	

For more mechanisms optional, consult us!