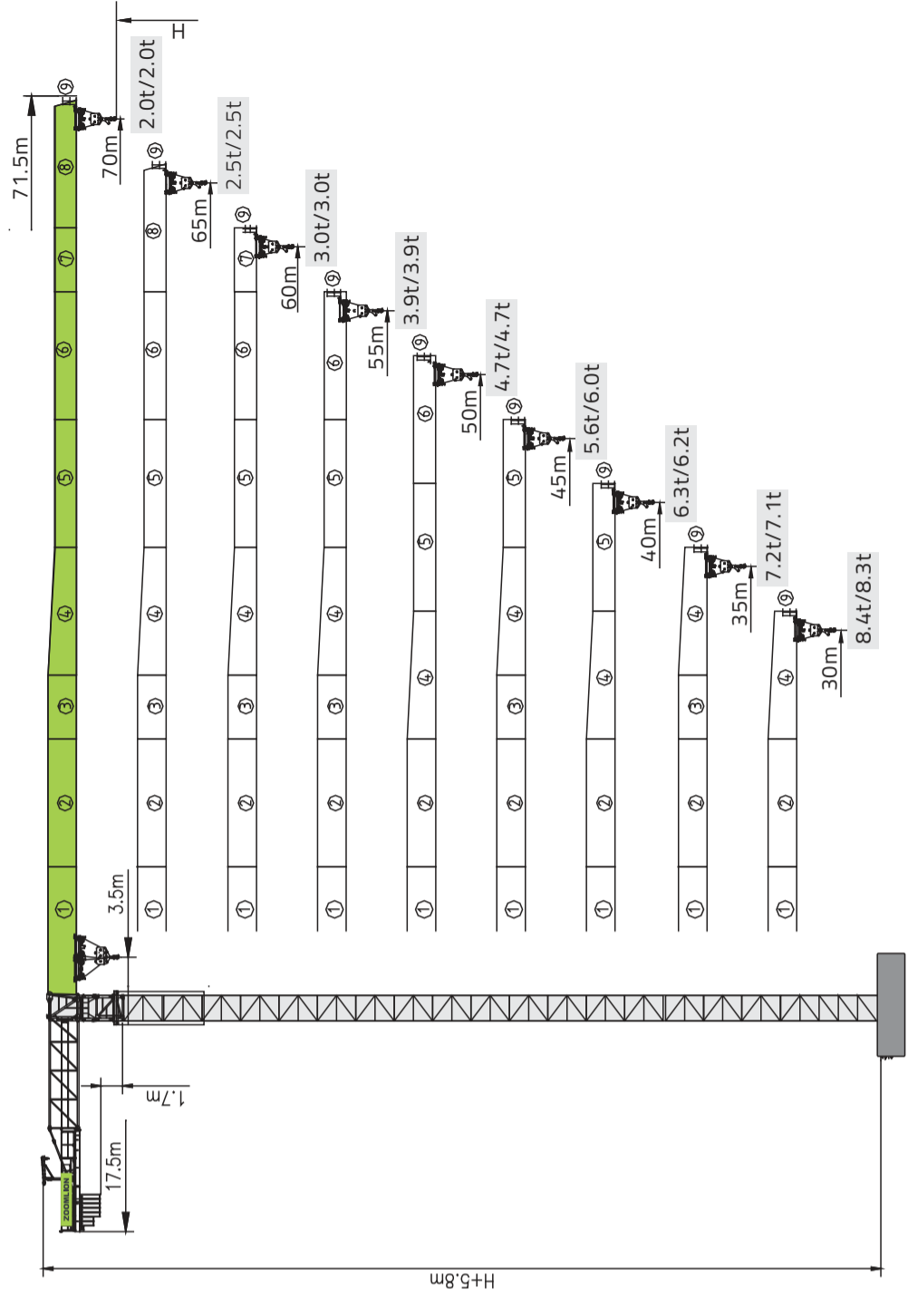


Mechanisms		bd		bd		kW
		IV	V	IV	V	
Hoisting	10t	m/min	80	20	40	37
	t	5	2.5	10	5	
12t	m/min	100	25	50	60	
	t	6	3	12	6	
Trolleying	BP55B	m/min	0-75		5.5	
Slewing	S75FA-130LB12/14A	r/min	0-0.68		2x7.5	
	S75FN-130LB12/14A					
Travelling	2-ZA52A-D	m/min	0-25		2x5.2	
	4-ZAH52A-D	m/min	0-25			
10t	380V(±10%) 50Hz	57.5+2x5.2(or 4x5.2)				
	12t	380V(±10%) 50Hz	80.5+2x5.2(or 4x5.2)			



**Zoomlion Heavy Industry Science & Technology Co.,Ltd.**  
Add:No.677 Lugu Road Zoomlion Industrial Park Changsha,Hunan,China,410205

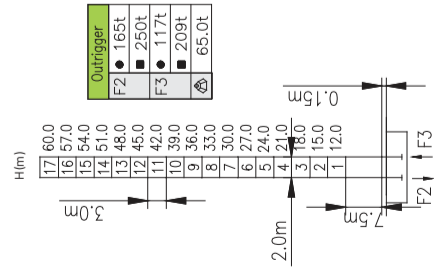
Copyright© 2017 Zoomlion. All rights reserved. Reproduction and copying of any part of the contents is not allowed for any purposes without Zoomlion's written approval.  
Note: No product coating appearance shall be subject to sample.



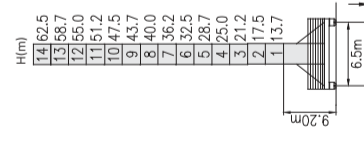
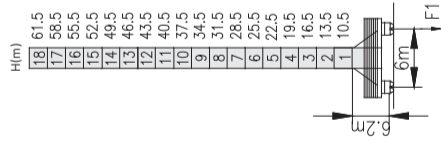
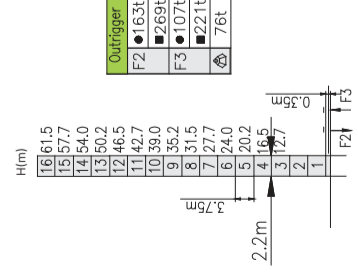
Zoomlion Logo	(Kg)	PHZ3000	PHZ2500	PHZ1300
70m	21300	5	2	1
65m	20000	5	2	0
60m	20000	5	2	0
55m	18800	5	1	1
50m	17000	4	2	0
45m	17500	5	1	0
40m	15300	3	2	1
35m	14000	3	2	0
30m	11500	3	1	0

Mast & reactions

L68A1



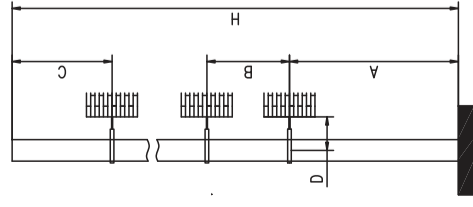
HQ1



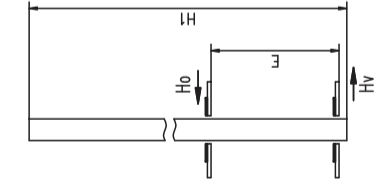
- Reactions in service
- Reactions out of service
- ⚠ Weight with max free-standing height, max jib without counter-weight and load
- ▨ Ballast weight with max free-standing height and max jib

- Reactions in service
- Reactions out of service
- ⚠ Without load and ballast with longest jib and maximum height

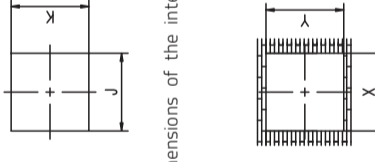
Anchorage & internal climbing



Mast	Jib(m)	A (m)	B (m)	C (m)	D (m)	H (m)
L68A1	70	48.9	36	47.1	5	≤168
HQ1-C	70	47.5	33.75	≤45.05	5	168≤H≤200
						≤226
						226≤H≤286



Dimensions of the internal climbing opening



Overall dimensions of the internal climbing frame

- Reactions in service
- Reactions out of service

Mast	Jib(m)	H1 (m)	E (m)	V (t)	Holt (t)	Hv(t)	J (m)	k (m)	X (m)	Y (m)	
L68A1	70	54	12-19	105.12	53.27	36.07	27.33	22.88	3.29	2.78	≥3.0
HQ1-C	70	52.5	15-18	12008	43.62	27	20.07	14.66	3.23	2.92	>3.1

Load diagram

10t

R(m)	Max capacity (m/t)	2.5~15	20	25	30	35	40	45	50	55	60	65	70
70	34.52m/5t	5.00	5.00	5.00	5.00	5.00	5.00	5.00	5.00	5.00	5.00	5.00	5.00
65	17.97m/10t	10.00	8.79	6.67	5.28	4.29	3.56	2.99	2.53	2.16	1.86	1.60	1.37
60	37.57m/5t	5.00	5.00	5.00	5.00	5.00	5.00	5.00	5.00	5.00	5.00	5.00	5.00
55	19.52m/10t	10.00	9.72	7.41	5.89	4.81	4.01	3.39	2.90	2.49	2.16	1.87	
50	39.76m/5t	5.00	5.00	5.00	5.00	5.00	5.00	5.00	5.00	5.00	5.00	5.00	5.00
45	20.64m/10t	10.00	7.94	6.33	5.19	4.34	3.68	3.16	2.73	2.37	2.07	1.81	1.57
40	44.81m/5t	5.00	5.00	5.00	5.00	5.00	5.00	5.00	5.00	5.00	5.00	5.00	5.00
35	23.22m/10t	10.00	9.16	7.34	6.05	5.09	4.35	3.76	3.27	2.86	2.48	2.15	1.87
30	47.48m/5t	5.00	5.00	5.00	5.00	5.00	5.00	5.00	5.00	5.00	5.00	5.00	5.00
25	25.48m/10t	10.00	9.80	7.87	6.51	5.49	4.70	4.07	3.53	3.06	2.64	2.27	1.94
20	45.00m/5t	5.00	5.00	5.00	5.00	5.00	5.00	5.00	5.00	5.00	5.00	5.00	5.00
15	28.04m/10t	10.00	10.00	9.23	7.67	6.50	5.60	4.80	4.10	3.50	2.95	2.50	2.10
10	40.00m/5t	5.00	5.00	5.00	5.00	5.00	5.00	5.00	5.00	5.00	5.00	5.00	5.00
5	27.35m/10t	10.00	10.00	8.96	7.44	6.30	5.40	4.60	3.90	3.30	2.75	2.30	1.90
0	35.00m/5t	5.00	5.00	5.00	5.00	5.00	5.00	5.00	5.00	5.00	5.00	5.00	5.00
0	26.65m/10t	10.00	10.00	8.68	7.20	6.00	5.10	4.30	3.60	3.00	2.45	2.00	1.60
0	30.00m/5t	5.00	5.00	5.00	5.00	5.00	5.00	5.00	5.00	5.00	5.00	5.00	5.00
0	25.92m/10t	10.00	10.00	8.40	7.00	5.80	4.90	4.10	3.40	2.80	2.25	1.80	1.40

12t

R(m)	Max capacity (m/t)	20	25	30	35	40	45	50	55	60	65	70
70	29.79m/6t	6.00	6.00	6.00	6.00	6.00	6.00	6.00	6.00	6.00	6.00	6.00
65	15.51m/12t	8.84	6.70	5.29	4.29	3.55	2.97	2.51	2.14	1.83	1.56	1.34
60	32.36m/6t	6.00	6.00	6.00	6.00	6.00	6.00	6.00	6.00	6.00	6.00	6.00
55	16.82m/12t	9.76	7.43	5.89	4.81	4.00	3.37	2.87	2.46	2.13	1.84	1.60
50	34.20m/6t	6.00	6.00	6.00	6.00	6.00	6.00	6.00	6.00	6.00	6.00	6.00
45	17.75m/12t	10.42	7.95	6.33	5.18	4.32	3.66	3.13	2.70	2.34	2.00	1.70
40	38.46m/6t	6.00	6.00	6.00	6.00	6.00	6.00	6.00	6.00	6.00	6.00	6.00
35	19.92m/12t	11.94	9.16	7.33	6.04	5.07	4.32	3.73	3.24	2.80	2.42	2.08
30	40.71m/6t	6.00	6.00	6.00	6.00	6.00	6.00	6.00	6.00	6.00	6.00	6.00
25	21.06m/12t	12.00	9.80	7.86	6.49	5.46	4.67	4.04	3.53	3.06	2.64	2.26
20	45.00m/6t	6.00	6.00	6.00	6.00	6.00	6.00	6.00	6.00	6.00	6.00	6.00
15	23.25m/12t	12.00	11.02	8.87	7.35	6.22	5.34	4.57	3.94	3.40	2.90	2.46
10	40.00m/6t	6.00	6.00	6.00	6.00	6.00	6.00	6.00	6.00	6.00	6.00	6.00
5	23.19m/12t	12.00	10.99	8.85	7.33	6.20	5.33	4.57	3.94	3.40	2.90	2.46
0	35.00m/6t	6.00	6.00	6.00	6.00	6.00	6.00	6.00	6.00	6.00	6.00	6.00
0	22.61m/12t	12.00	10.67	8.58	7.10	6.00	5.13	4.37	3.74	3.19	2.70	2.26
0	30.00m/6t	6.00	6.00	6.00	6.00	6.00	6.00	6.00	6.00	6.00	6.00	6.00
0	22.01m/12t	12.00	10.33	8.30	6.82	5.70	4.83	4.07	3.50	2.97	2.50	2.08