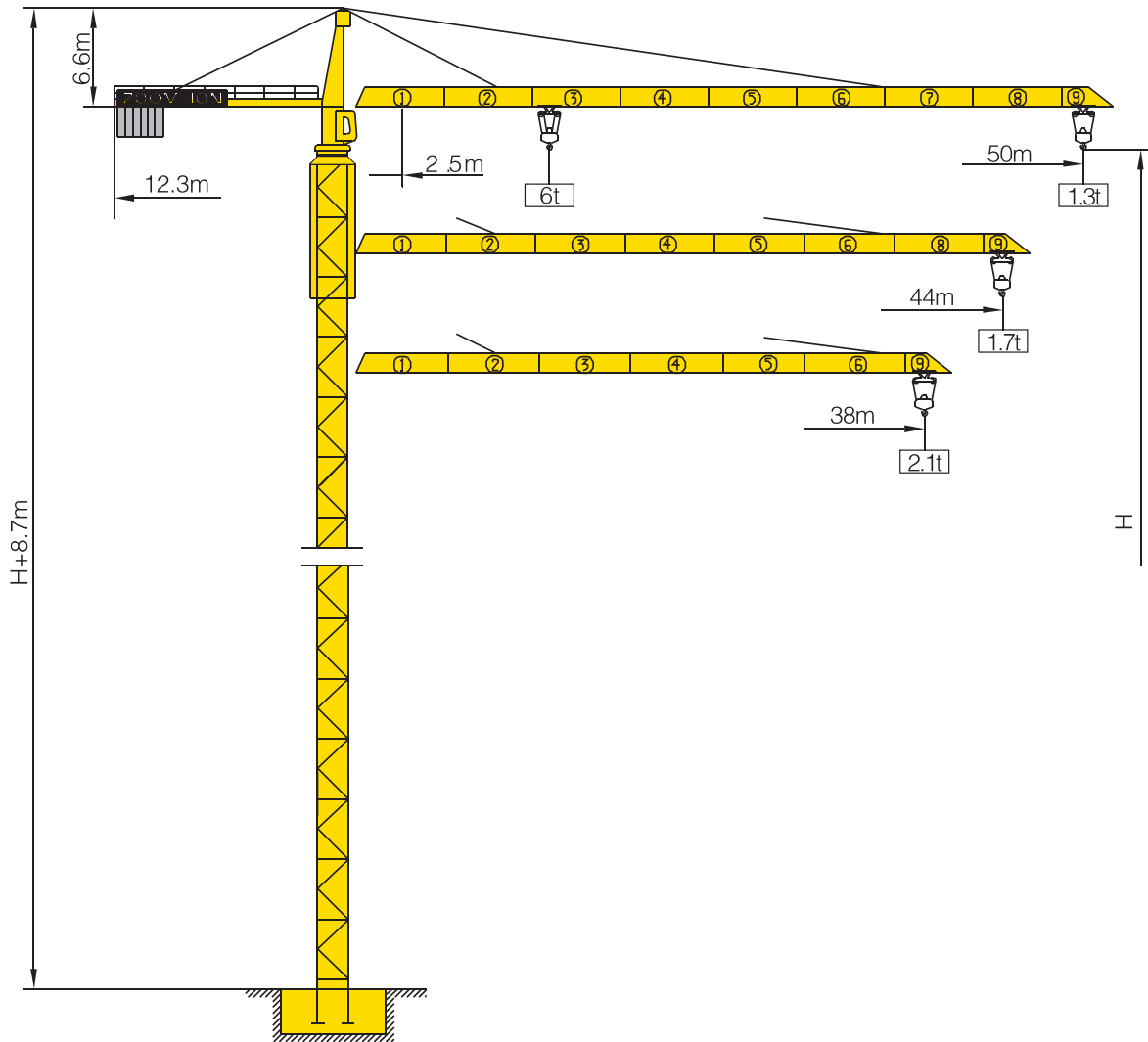


# TC5013B-6



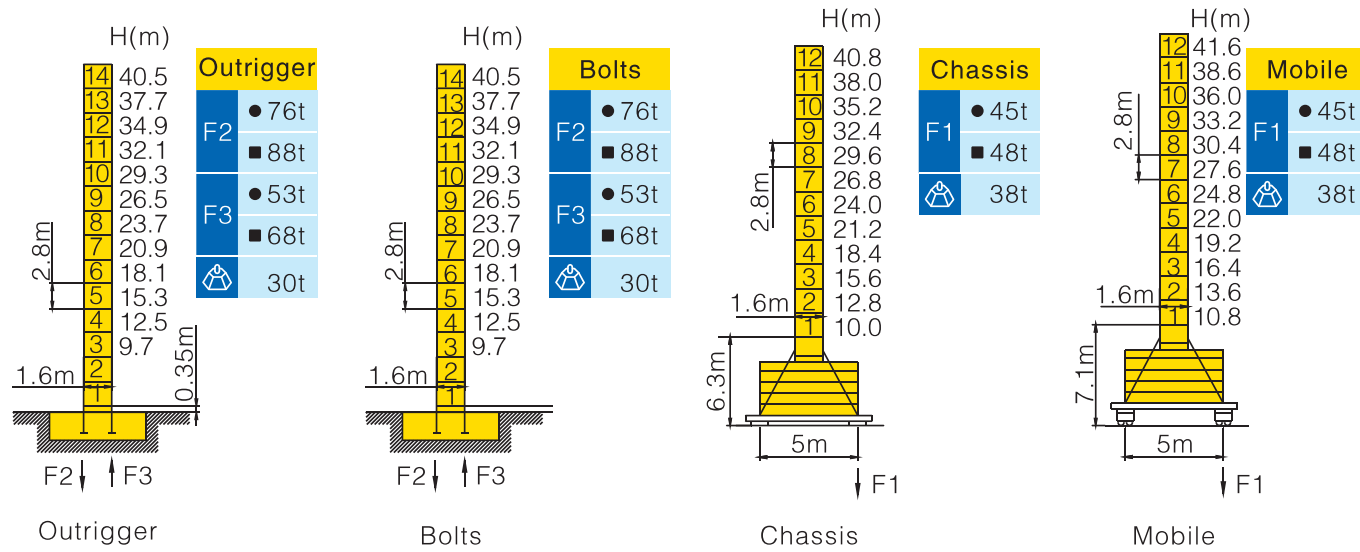
## Counter-jib ballast

			(Kg)	PHZ2600	PHZ1300
50m	12.3m	13000	4	2	
44m	12.3m	11700	4	1	
38m	12.3m	10400	4	0	

## Working Height(m) @ Wall-tie Location(m)

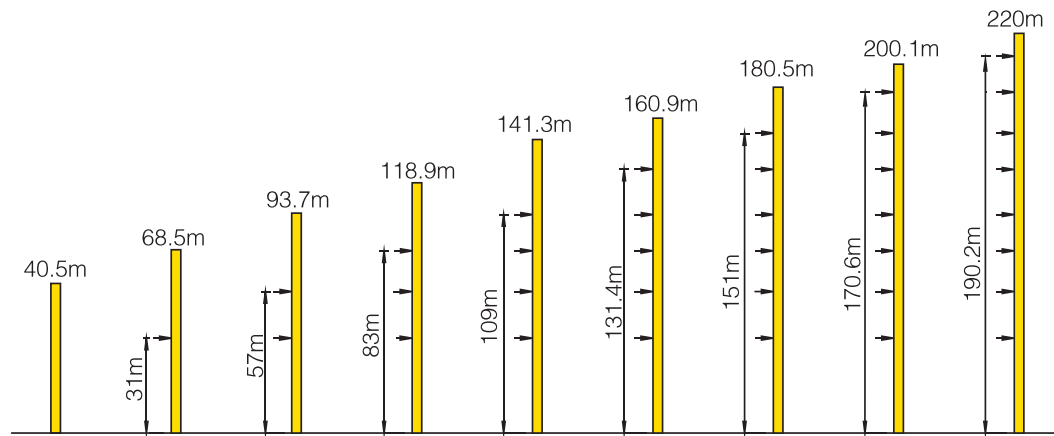
Model Detail	Mast Code	Wall-tie #1	Wall-tie #2	Wall-tie #3	Wall-tie #4	Wall-tie #5	Wall-tie #6	Wall-tie #7	Wall-tie #8
TC5013B-6	E2	68.5 @ 31	93.7 @ 57	118.9 @ 83	141.3 @ 109	160.9 @ 131.4	180.5 @ 151	200.1 @ 170.6	220 @ 190.2

## Masts Reactions




● Reactions in service ■ Reactions out of service  
 ⊕ Without load and ballast with longest jib and maximum height  
 ⓘ For more erecting solutions, consult us!











## Anchorage



## Load diagrams

		Max.Capacity m/t	15.0	18.0	20.0	22.0	24.0	26.0	29.0	32.0	35.0	38.0	41.0	44.0	47.0	50.0
50m (R=51.2)	⌋	2.5-26.3m 3t	3.00						2.69	2.38	2.13	1.92	1.74	1.58	1.45	1.33
	⌋⌋	2.5-14.5m 6t	5.79	4.69	4.15	3.71	3.34	3.00	2.66	2.35	2.10	1.89	1.71	1.55	1.42	1.30
44m (R=45.2)	⌋	2.5-28.1m 3t	3.00						2.91	2.59	2.32	2.09	1.90	1.73		
	⌋⌋	2.5-15.5m 6t	6.00	5.06	4.48	4.01	3.62	3.29	2.88	2.56	2.29	2.06	1.87	1.70		
38m (R=39.2)	⌋	2.5-28.7m 3t	3.00						2.97	2.63	2.36	2.13				
	⌋⌋	2.5-15.7m 6t	6.00	5.15	4.56	4.08	3.68	3.35	2.94	2.60	2.33	2.10				

## Mechanisms

		Hoisting		QS680D	
	Slewing		HPW55A.130		
	0 ~ 0.6 r/min	5.5 kW	I	 3t  6t	8.88 m/min 4.44 m/min
	Trolleying		BE33D		
	42/21 m/min	3.3/2.2 kW	II	 3t  6t	40 m/min 20 m/min
	Travelling		ZA52-D ZC52-D		
	0 ~ 25 m/min	2×5.2 kW	III	 1.5t  3t	80 m/min 40 m/min
		380V(+10%–10%) 50Hz		32.8+2×5.2 kW	



5.4/24/  
24 kW



440m Ⓞ  
( 6 layers )

Ⓞ Consult us  
If overtop

For more mechanisms optional, consult us!