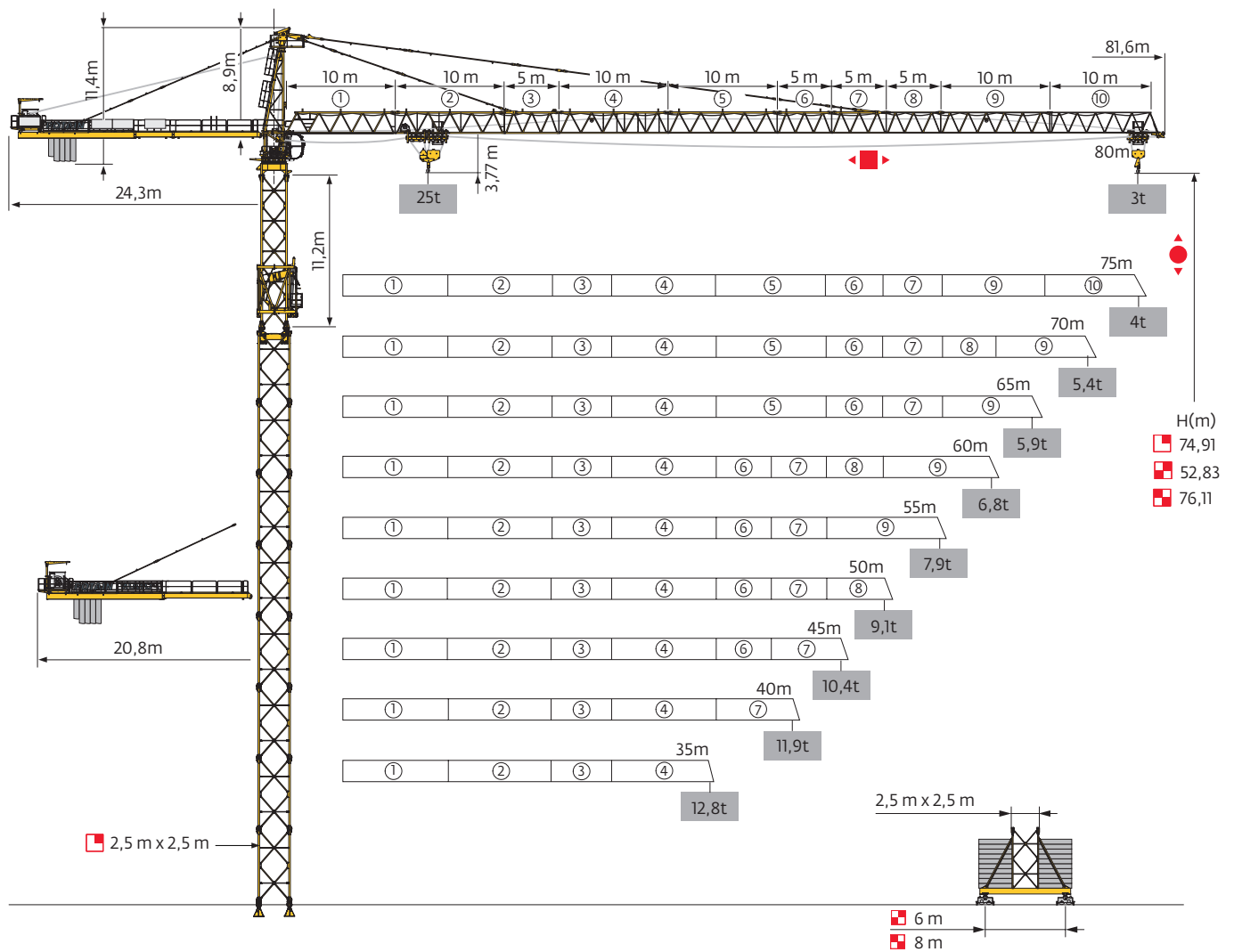
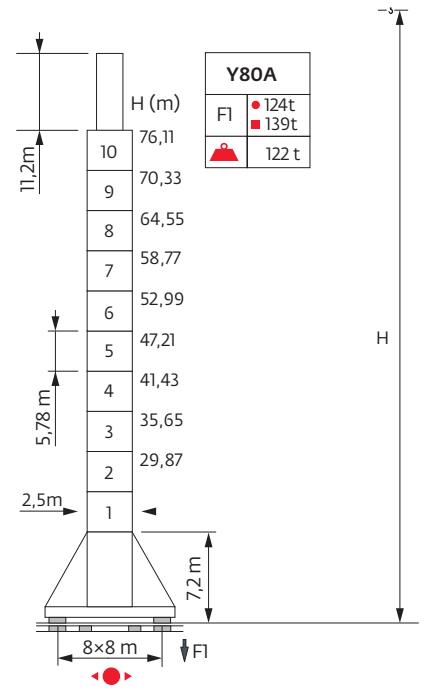
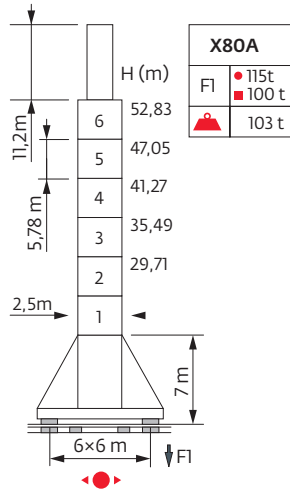
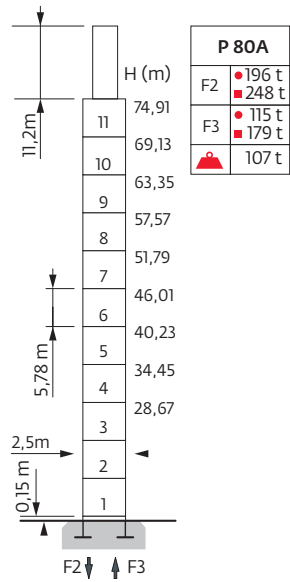


## MC 系列 MC 480



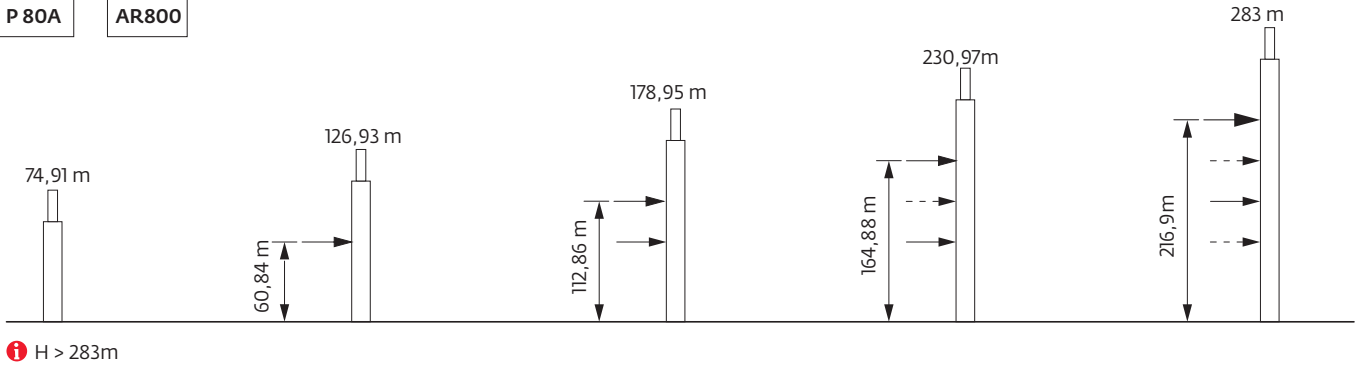
塔身组成 - 反力

2,5 m



附着

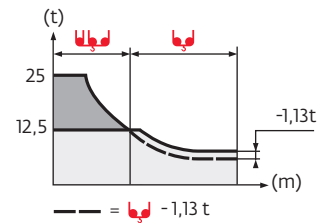
P 80A AR800



负荷曲线



80m	3,75	▶	14,3	15	17	20	22	25	25,2	27,2	30	32	35	40	45	50	55	60	65	70	75	80	m
▲▼▲▼			25	23,6	20,3	16,7	14,8	12,6	12,5	12,5	11,1	10,3	9,3	7,9	6,8	5,9	5,2	4,6	4,2	3,7	3,4	3	t
75 m	3,75	▶		15,6	17	20	22	25	27	27,7	29,9	32	35	40	45	50	55	60	65	70	75		m
▲▼▲▼				25	22,6	18,6	16,6	14,2	12,9	12,5	12,5	11,6	10,4	8,9	7,7	6,8	6	5,3	4,8	4,3	4		t
70 m	3,75	▶			18	20	22	25	27	30	32,3	34,8	35	40	45	50	55	60	65	70			m
▲▼▲▼					25	22,2	19,8	17,1	15,6	13,7	12,5	12,5	12,4	10,7	9,3	8,2	7,3	6,6	5,9	5,4			t
65 m	3,75	▶			18,1	20	22	25	27	30	32,4	34,9	35	40	45	50	55	60	65				m
▲▼▲▼					25	22,2	19,9	17,1	15,6	13,7	12,5	12,5	12,5	10,7	9,3	8,2	7,3	6,6	5,9				t
60 m	3,75	▶			18,7	20	22	25	27	30	32	33,4	36,1	40	45	50	55	60					m
▲▼▲▼					25	23,1	20,7	17,8	16,2	14,3	13,2	12,5	12,5	11,1	9,7	8,5	7,6	6,8					t
55 m	3,75	▶			19,3	20	22	25	27	30	32	34,6	37,4	40	45	50	55						m
▲▼▲▼					25	24	21,5	18,5	16,9	14,9	13,8	12,5	12,5	11,6	10,1	8,9	7,9						t
50 m	3,75	▶			19,6	20	22	25	27	30	32	35,1	37,9	40	45	50							m
▲▼▲▼					25	24,4	21,8	18,8	17,2	15,1	14	12,5	12,5	11,7	10,2	9,1							t
45 m	3,75	▶			19,7	20	22	25	27	30	32	35,4	38,2	40	45								m
▲▼▲▼					25	24,6	22,1	19	17,3	15,3	14,1	12,5	12,5	11,9	10,4								t
40 m	3,75	▶			19,9	20	22	25	27	30	32	35,6	38,4	40									m
▲▼▲▼					25	24,8	22,2	19,1	17,5	15,4	14,3	12,5	12,5	11,9									t
35 m	3,75	▶			20	22	25	27	30	32	35												m
▲▼▲▼					25	22,4	19,3	17,6	15,5	14,3	12,8												t



压重

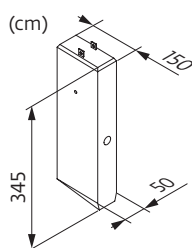
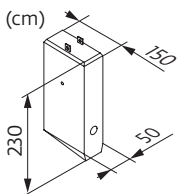
2,50 m	X80A	H (m)	52,83	47,05	41,27	35,49	29,71					
		⚖️ (t)	96	96	96	96	96					
	Y 80A	H (m)	76,11	70,33	64,55	58,77	52,99	47,21	41,43	35,65	29,87	
		⚖️ (t)	96	84	60	60	60	60	60	60	60	

起重臂重量&平衡臂配重




臂长	⚖️ (kg) (+/- 5%)		100 LVF			150 LVF - 180 LVF		
	吊钩	吊钩+平衡臂	4000 kg	6000kg	⚖️ (kg)	4000 kg	6000kg	⚖️ (kg)
80 m	18452	19457	0	5	30000	2	3	26000
75 m	17692	18697	1	4	28000	1	3	22000
70 m	17557	18562	1	4	28000	1	3	22000
65 m	16797	17802	2	3	26000	2	2	20000
60 m	15732	16737	1	3	22000	1	2	16000
55 m	14972	15977	2	2	20000	2	1	14000
50 m	14462	15467	2	3	26000	2	2	20000
45 m	13702	14707	1	3	22000	1	2	16000
40 m	12687	13692	2	2	20000	2	1	14000
35 m	11537	12542	1	2	16000	1	1	10000

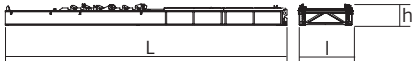
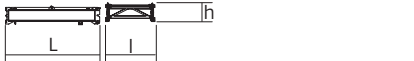

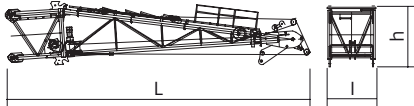
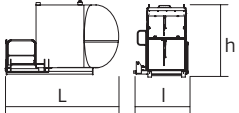
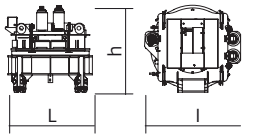
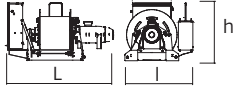
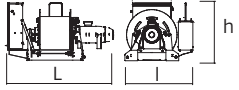
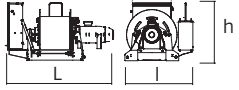
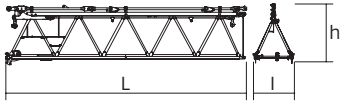
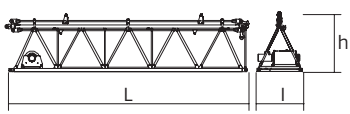
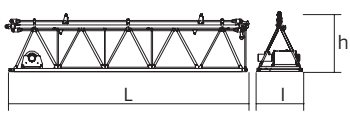
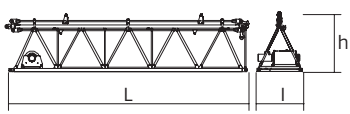
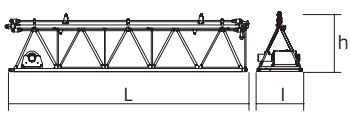
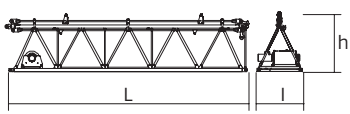
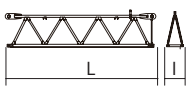
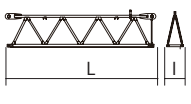
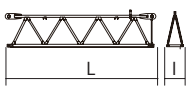
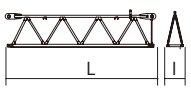
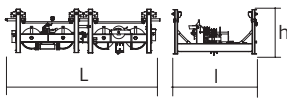
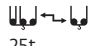
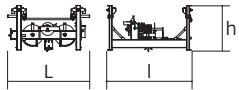
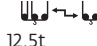
CBD - 4000 kg

CBC - 6000kg



## 尺寸重量表

塔机回转部分 :  80 m -  -  100 LVF

塔机回转部分		L (m)	l (m)	h (m)	kg (+/- 5%)
平衡臂		10,925	2,1	0,8	3550
		4,0	1,95	0,7	950
		8,3	1,9	0,7	1,95
塔帽		11,95	2,1	2,52	7400
驾驶室	 V140S 太空舱	3,4	1,9	2,57	1130
回转机构	 RVF183	2,56	2,81	2,54	8530
起升机构	 100 LVF	3,18	1,6	1,88	4455
	 150 LVF GH	4,27	1,93	1,9	9225
	 180 LVF GH	4,27	1,93	1,9	9225
起重臂根部节	 ①	10,2	2,02	2,36	3212
起重臂节	 ②	10,355	1,9	2,252	3680
	 ④	10,345	1,9	2,232	2105
	 ⑤	10,454	1,9	2,219	1825
	 ⑨	10,149	1,9	1,986	1270
	 ⑩	10,126	1,9	1,95	895
起重臂节	 ③	5,351	1,9	2,245	1445
	 ⑥	5,345	1,9	2,221	1015
	 ⑦	5,337	1,9	2,248	1150
	 ⑧	5,197	1,9	1,997	760
后小车	  25t	4,1	2,19	1,16	1195
前小车	  12,5t	2,14	2,19	1,16	645

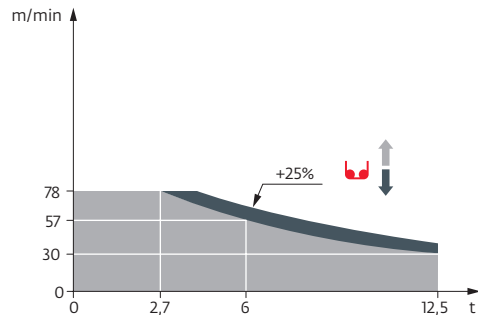
塔机回转部分		L (m)	l (m)	h (m)	kg (+/- 5%)	
吊钩		1,83	0,34	2,34	905	
		1,18	0,22	1,95	450	
小车		1,8	2,23	1,44	720	
吊钩		1,18	0,44	2,26	896	
顶升装置						
顶升套架		□2,5 m	7,4	3,66	5,83	6200
滑动塔身		□2,5 m	11,08	2,1	2,1	7100
滑动底座		□2,5 m	2,35	1,58	2,35	5960
塔身节						
R 87		5,98	2,90	2,90	4350	
R 86		5,98	2,90	2,90	4050	
塔机底座						
固定支脚		P 80A	1,21	0,8	0,8	1970
		R 80A	0,68	0,56	0,3	830
行走基节		X 80A Y 80A	6,0 6,0	3,0 3,0	3,0 3,0	5600 7400
斜撑		X 80A	4,66	0,38	0,30	450
		Y 80A	5,48	0,42	0,37	800
半梁		X 80A	4,27	0,9	0,54	450
		Y 80A	5,62	1,17	0,60	1000
纵梁		X 80A	9,02	0,94	0,54	950
		Y 80A	11,86	1,17	0,60	2100
压重支架		X 80A	3,39	0,30	0,63	180
		Y 80A	4,65	0,32	0,66	270
底盘横梁		X 80A	6,56	0,60	0,79	1400
		Y 80A	8,60	0,70	1,15	2000

## 机构

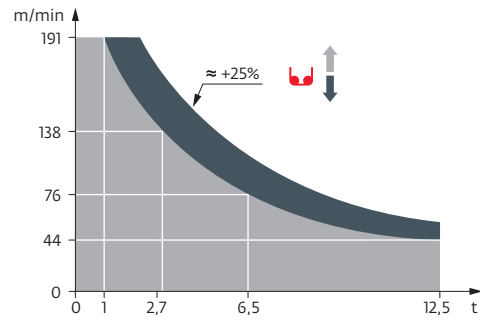
380 V - 50 Hz													ch - PS hp	kW	
	100 LVF 63 Optima	m/min	30	40	57	78	15	20	28,5	39	100	75	726m		
		t	12,5	9	6	2,7	25	18	12	5,4					
	150 LVF 63 GH Optima	m/min	44	76	101	138	191	23	42	60	84	96	150	110	1200 m
		t	12,5	6,5	4,4	2,7	1	25	13	8,8	5,4	3,6			
	RVF183 Optima+	tr/min U/min -rpm	0 → 0,8									3x12	3 x9		
	10DVF 10	m/min	0 → 64 (25 t) - 0 → 100 (12,5 t) - 0 → 110 (6,25 t)									10	7,4		
	X80A Y80A RT 664 A2B-2V	m/min	16 → 32									6 x7	6 x 5,2		

CEI38,	IEC38	kVA
380 V (+10% -10%) 50 Hz		100 LVF : 106 kVA 150 LVF GH : 146 → 86 kVA

100 LVF 63 Optima



150 LVF 63 GH Optima



- 上绕度
- 工作状态下的反力
- 非工作状态下的反力
- 起重机在无载荷、无配重、独立高度状态下的压重
- 总配重
- 13, 4m卡车
- 40"立方集装箱
- 坚固的附着框
- 松开的附着框
- 起升
- 变幅
- 回转
- 行走
- 额定功率
- 参阅内爬
- 电源控制功能：使"起升"速度与可用电源适配
- 联系我们

此商业文件不承担法律责任，对于任何技术信息，请查阅相应说明书。



马尼托瓦克起重设备（中国）有限公司

工厂地址：江苏省张家港市经济开发区（南）区金塘路55号  
 市场总部：上海市漕溪北路333号中金国际广场B座1103-1105室  
 总机：021-6457 0066  
 传真：021-6457 4985  
 邮编：200030