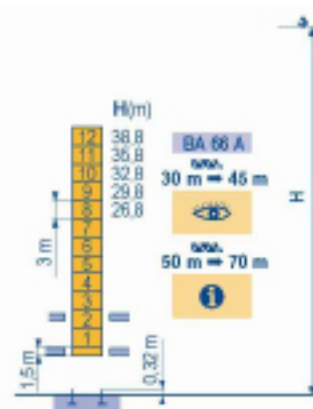
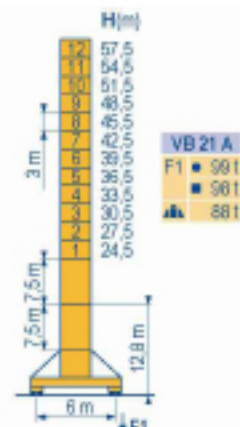


Masts / Reactions

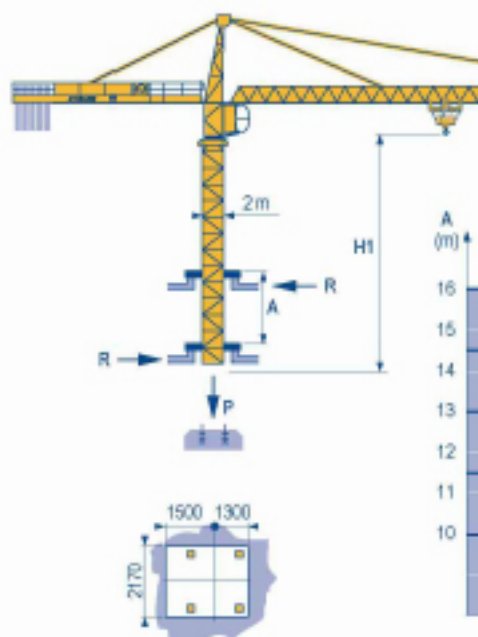
MC31

□ 2 m
max.
 30 m ⇒ 70 m



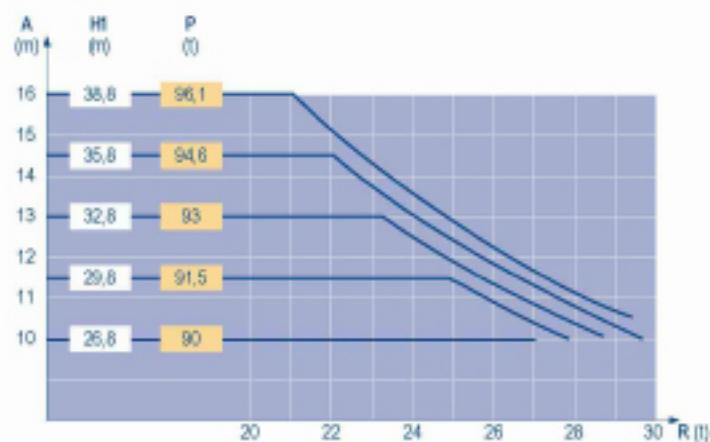
Climbing crane

MC31



BA 66 A

□ 2 m
max.
 30 m ⇒ 45 m



TOPKIT
 MC 310 K12

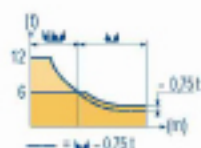
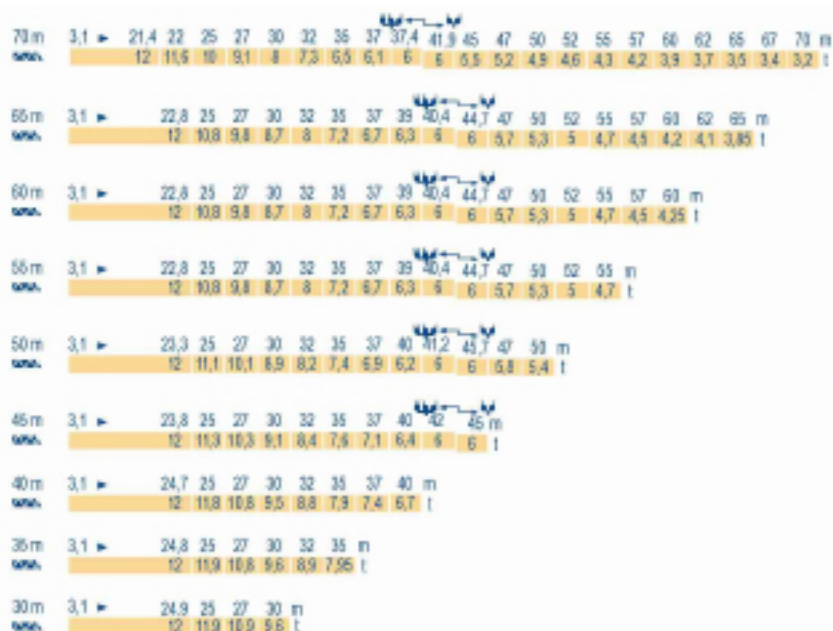
POTAIN

GB

- Reactions in service
- Reactions out of service
- ▲ Without load, ballast (or transport axles), with maximum jib and maximum height.
- ! Consult us
- 👁 See climbing crane

Load diagrams

MS1



Counter-jib ballast

MS1

Height (m)	4 600 - 4 200 - 2 300 kg		4 200 - 700 kg	
	Distance (m)	Weight (kg)	Distance (m)	Weight (kg)
70m	20,5m	24 500	20,5m	24 500
65m	20,5m	23 700	20,5m	23 600
60m	20,5m	21 800	20,5m	21 700
55m	18m	24 900	18m	24 500
50m	18m	22 600	18m	22 400
45m	18m	19 500	18m	18 900
40m	18m	17 200	18m	16 800
35m	18m	14 900	18m	14 000
30m	12m	20 700	12m	20 300

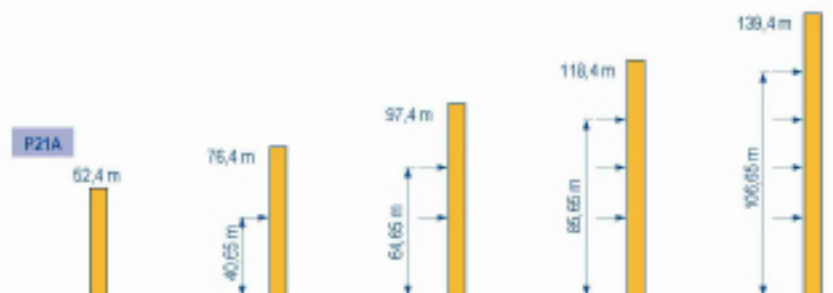
Base ballast

MS1

Height (m)	57,5	54,5	51,5	48,5	45,5	42,5	39,5	36,5	33,5	30,5	27,5	24,5	21,5
Weight (t)	84	72	72	72	72	72	72	60	60	60	60	60	60

Anchorage

MS1



TOPKIT
MC 310 K12

POTAIN

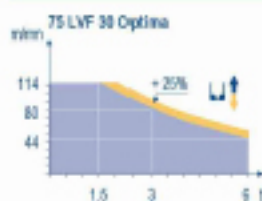
GB

- A Distance between collars
- H1 Crane height
- P Crane weight (in service)
- R Horizontal reaction

Mechanisms

MC310

		↕ ↑		↕ ↑		hp	kW	⚙️	
⚙️	70 RCS 30	min/min	0 → 40	0 → 80	0 → 20	0 → 40	70	51	523 m
		l	6	3	12	6			
⚙️	75 LVF 30 Optima	min/min	0 → 44 → 56 → 80 → 114	0 → 22 → 28 → 40 → 57			75	55	570 m
		l	6	4,5	3	1,5	12	9	6
↔	6 D3 V4	min/min	15 - 50 (12 l)			100 (5 l)	7,4	5,4	
⚙️	RVF 162 Optima	rpm	0 → 0,7				2x 7,5	2x 5,5	
⚙️	YB 20A VB 21A	RT 544 AT 2V R ≥ 13 m	min/min			13,5 - 27	4x 7	4x 5,2	
		CEI 38	IEC 38		kVA				
		400 V (+6% -10%) 50 Hz			70 RCS : 100 kVA 75 LVF : 100 kVA				



GB

- ⬆️ Hoisting
- ↔ Trolleying
- ⚙️ Slewing
- ⬆️ Travelling



This commercial document is not legally binding.
For any technical information, please refer to the corresponding instructions.

Manitowoc
Crane CARE

Manitowoc
Crane Group



Americas

Tel : +1 688 470 7370
Tel : +1 717 593 2000

Europe - Middle East - Africa

Tel : +33 (0) 4 72 01 50 00
Tel : +44 (0) 191 522 2000

Asia - Pacific

Tel : +85 8284 1188
Fax : +85 8982 4142

www.manitowoccrane.com

Manitowoc Crane Group Asia Pte Ltd

Manitowoc Crane Group

4 Kwong Min Road
Singapore 628797

Tel: +65 6264 1180

Fax: +65 6982 4943

www.manitowoccrane.com

MC 310 K12

Ref. 2634 45 MOB 2

Copyright/Reproduction interdite © POTAIN 2004

Realization Sebdo