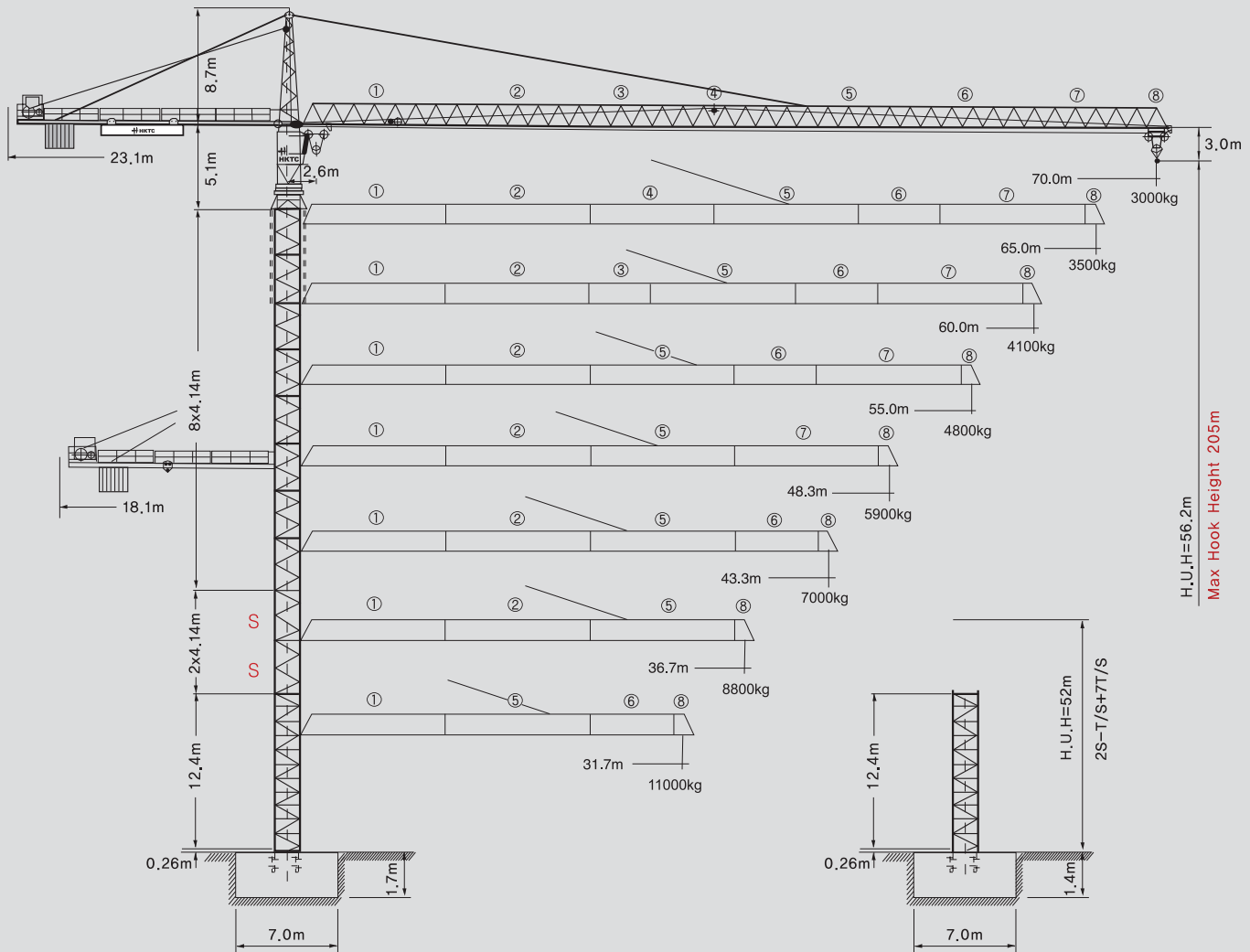




ISO 9001 : 2000
 ISO 14001 : 2004
 KSA 9001 : 2001



290HC-E TOWER CRANE



H.U.H=56.2m
 Max Hook Height 205m

H.U.H=52m
 2S-T/S+T/S

HANKOOK CRANE & TECH

290HC-E TOWER CRANE

290HC-E / 65kW

Number of tower sections	Hoisting height		
	m	m	m
0	14,7	14,7	15,9
1	S 18,9	S 18,9	S 20,0
2	S 23,0	S 23,0	S 24,2
3	27,2	27,2	28,3
4	31,3	31,3	32,4
5	35,4	35,4	36,6
6	39,6	39,6	40,7
7	43,7	43,7	44,9
8	47,9	47,9	49,0
9*	52,0	52,0	53,1
10*	56,2	-	-

--	--	--

S = Tower section reinforced
 * = Lower guide section after erection

Technical data

Data for rail-going crane

Wheel gauge	6.0m
Track gauge	6.0m




Interior curve radius(6m-undercarriage)	12.5m
Dead weight(6m-undercarriage)	85,000kg

※Max, hoisting height + max, radius.

Radius and capacity

Length of jib (Slewing radius) m	MAX Capacity m/kg	Radius and capacity																			
		25.0	28.0	31.7	34.0	36.7	38.0	40.0	42.0	43.3	45.0	48.3	51.0	53.0	55.0	57.0	60.0	62.0	65.0	67.0	70.0
70.0(R=71.36)	^{2.6-19.1} 12000	10000	9277	8050	7420	6785	6510	6130	5780	5570	5310	4870	4550	4330	4130	3950	3690	3540	3320	3190	3000
65.0(R=66.36)	^{2.6-22.4} 12000	10000	9700	8420	7770	7110	6820	6420	6060	5840	5575	5110	4780	4560	4350	4150	3890	3730	3500		
60.0(R=61.36)	^{2.6-24.1} 12000	11352	10160	8820	8140	7450	7160	6740	6360	6130	5860	5380	5030	4800	4580	4380	4100				
55.0(R=56.36)	^{2.6-25.0} 12000	12000	10595	9210	8500	7790	7480	7045	6650	6420	6130	5630	5270	5030	4800						
48.33(R=49.7)	^{2.6-26.0} 12000	12000	11070	9625	8890	8145	7820	7370	6960	6720	6420	5900									
43.33(R=44.7)	^{2.6-27.0} 12000	12000	11500	10010	9250	8480	8145	7680	7250	7000											
36.67(R=38.0)	^{2.6-27.8} 12000	12000	11930	10390	9600	8800															
31.67(R=33.0)	^{2.6-29.3} 12000	12000	12000	11000																	

Speeds

	0.7 sl./min	2X6.3kW
	8.0 / 16.0 / 50.0 / 95.0m/min	5.5kW
	25.0m/min with 6m-undercarriage	2X7.5kW

Hoist gear	Gear	kg	m/min
65.0kW, WIW 271 (Rx155-K) Elmag, WSB Hoisting height 205m (7 layers)	1	12000	1.4/15.1
	2	5350	5.1/53.9
	3	2200	10.1/106.3

※Total motor output

100kW

※Total power requirement(with a simultaneity factor of 0.8)

92kVA

※This specification is subject to change without prior notice for high efficiency.

※In case of generator : Min, 250kVA above



290HC-E Packing List

Item	Quantity	Description	This list cannot be used for the calculation of the smallest transport volume.	Length m	Width m	Height m	Unit weight kg	Total weight kg
1	2	Rail bogie with drive		1,63	0,92	0,95	1450	2900
2	2	Rail bogie without drive		1,37	0,62	0,95	1280	2510
3	1	Support arm long		9,10	0,80	0,80		1650
4	2	Support arm short		4,45	0,77	0,77	800	1600
5	2+2	Border support		5,46-5,40	0,11-0,18	0,16-0,38	175-525	1400
6	4	Support strut		4,14	0,18	0,25	320	1320
7	1	Guide section cpl		8,39	2,80	2,50		4070
8	1	Undercarriage tower section		3,73	2,62	2,62		2550
9	8	Tower section		4,14	2,30	2,30	2260	18080
10	2	S / Tower section		4,14	2,30	2,30	2600	5200
11	1	Slewing platform cpl. with ball slewing ring and ring support		5,49	2,74	2,68		10120
12	1	Tower head section		8,88	1,64	1,80		2700
13	1	Counter-jib heed		9,10	2,42	0,92		3260
14	1	Counter-jib heel section and guying		8,44	1,77	0,92		2800
15	1	Intermediate counter-jib section		5,22	1,76	0,92		1580
16	1	Jib heel section and guying		12,02	1,84	1,96		2980
17	3	Intermediate jib section		12,02	1,63	1,87	2165 2070 1200	5435
18	2	Intermediate jib section		5,36 7,03	1,63	1,87	925 1015	1940
19	1	Intermediate jib section		10,36	1,63	1,87		1864
20	1	Jib head		2,21	1,84	1,14		330
21	1	Trolley, Hook		1,89	1,83	1,57		1150
22	1	Base tower section		12,42 (8,85)	2,30 (2,30)	2,30 (2,30)		7800 (4580)
24	1	Hydraulic system, supporting and climbing cross members		2,10	1,25	1,00		800
25	1	Hoist gear frame (Wiw271 Rx155-K)		4,12	2,40	1,66		4790
26	1	Crate with small parts, ropes and foundation angle irons		1,1	1,0	1,24		3000



Head Office : 176 Eunam-ri, Chopyeung-myeon, Jincheon-gun, Chungbuk, Korea (365-852) TEL,+82-43-838-3311 FAX,+82-43-838-3361
 Seoul Office : 197-28, 13F E&C Venture Dream Tower VI, Guro-dong Guro-Gu, Seoul, Korea TEL,+82-2-830-0040 FAX,+82-2-830-0065
 Viet Nam : Road 25B, Nhon Trach 2 Industrial Park, Nhon Trach District, Dong Nai Province TEL,+84-61-356-9500 FAX,+84-61-356-9501
 Gulf Branch : P.O.Box 18379, JAFZ Dubai, U.A.E TEL,+971-4-8815727 FAX,+971-4-8815728
 Qatar Office : P.O.Box 55654, Doha, Qatar TEL,+974-466-1326 FAX,+974-465-0049