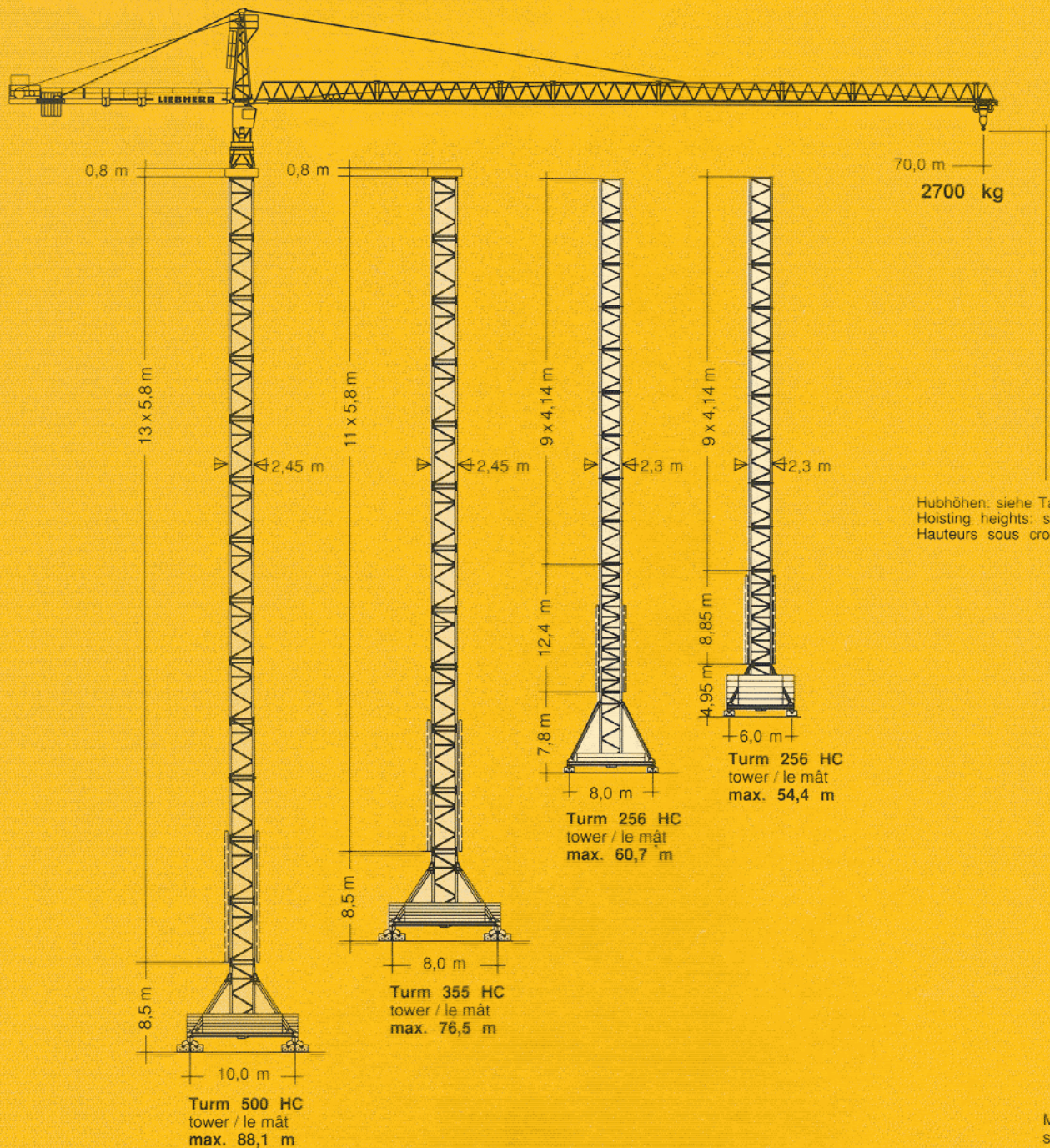
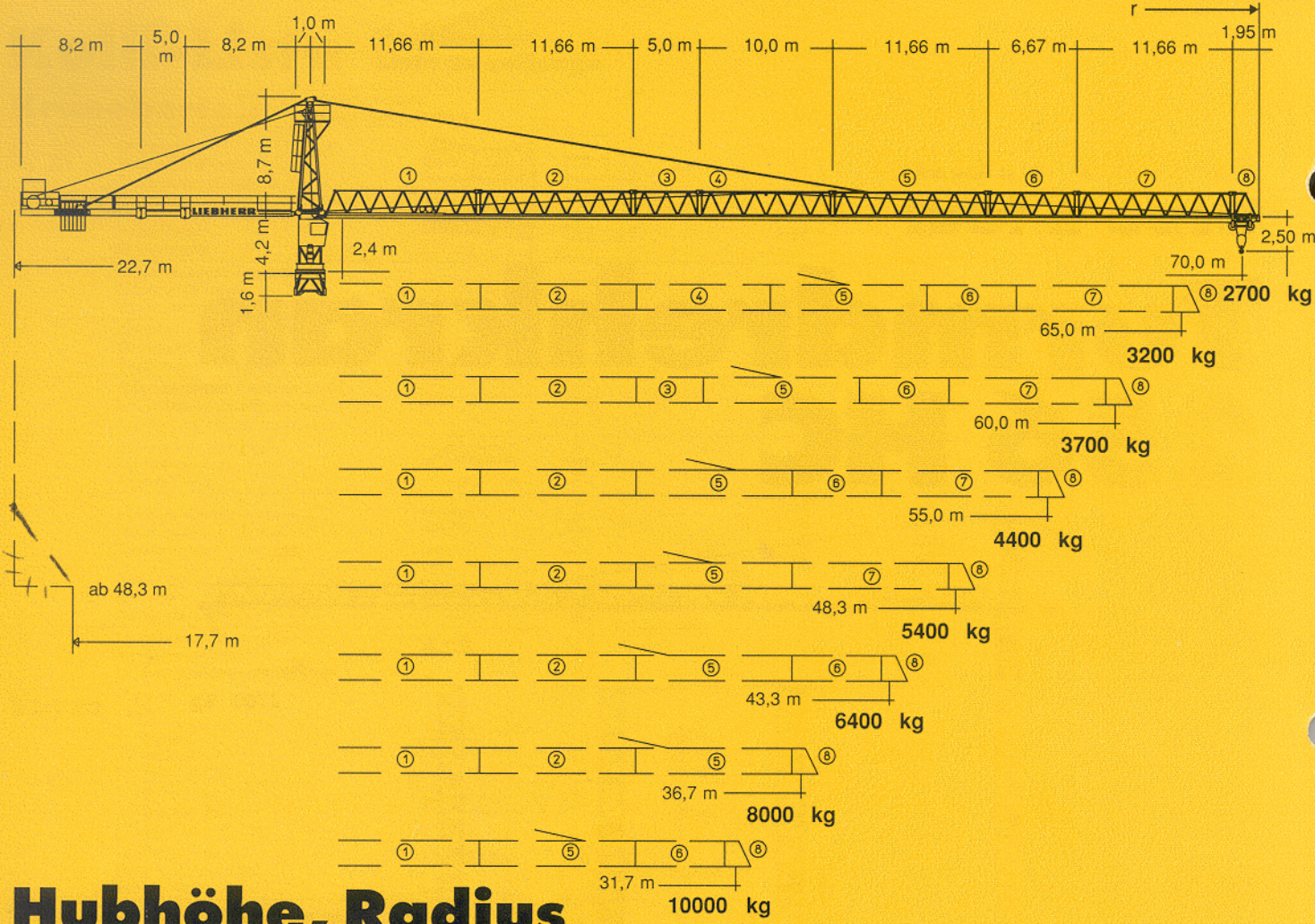


Tower Crane
Grue à tour

Turmdrehkran 256 HC





Hubhöhe, Radius

Hoisting height, Radius

Hauteur sous crochet, Rayon

| mit Turm with tower avec mât | 500 HC | | 355 HC | | 256 HC | | |
|--|--------|-------|--------|-------|--------|-------|--------|
| zuzüglich Turmstücke / plus tower sections / plus éléments de mât | | | | | | | |
| 0 | m 4,5 | 12,7 | m 4,5 | 12,7 | m 16,0 | 23,5 | |
| 1 | 10,3 | 18,5 | 10,3 | 18,5 | 20,1 | 27,7 | |
| 2 | 16,1 | 24,3 | 16,1 | 24,3 | 24,3 | 31,8 | |
| 3 | 21,9 | 30,1 | 21,9 | 30,1 | 28,4 | 35,9 | |
| 4 | 27,7 | 35,9 | 27,7 | 35,9 | 32,5 | 40,0 | |
| 5 | 33,5 | 41,7 | 33,5 | 41,7 | 36,7 | 44,1 | |
| 6 | 39,3 | 47,5 | 39,3 | 47,5 | 40,8 | 48,2 | |
| 7 | 45,1 | 53,3 | 45,1 | 53,3 | 45,0 | 52,4 | |
| 8 | 50,9 | 59,1 | 50,9 | 59,1 | 49,1 | 56,5 | |
| 9 | 56,7 | 64,9 | 56,7 | 64,9 | 53,2* | 60,7* | |
| 10 | 62,5 | 70,7 | 62,5 | 70,7 | 57,3* | - | |
| 11 | 68,3 | 76,5 | 68,3* | 76,5* | - | - | |
| 12 | 74,1 | 82,3 | - | - | - | - | |
| 13 | 79,9* | 88,1* | - | - | - | - | |
| Innenkurvenradius Interior curve radius Rayon de courbe intérieur | 26,0 m | | 18,0 m | | 18,0 m | | 12,5 m |

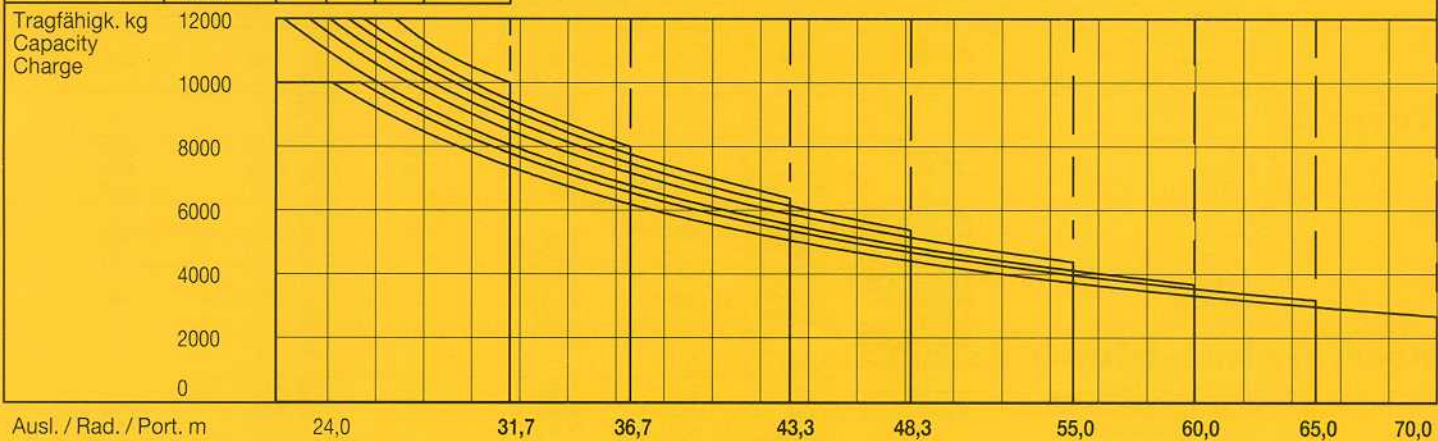
* Führungsstück nach Montage ablassen. / Lower guide section after erection. / Baissez la cage télescopique après le montage.
 Weitere Hubhöhen sowie Klettern im Gebäude auf Anfrage. / Further hoist heights and climbing in the building on request. /
 Hauteurs sous crochet plus élevées et hissage dans le bâtiment sur demande.

Ausladung und Tragfähigkeit

Radius and capacity

Portée et charge

| Auslegerlänge Length of jib Longueur de flèche m r | max. kg m/kg | m/kg | | | | | | | | | | | | | | | | | |
|---|---------------------|-------|-------|-------|-------|------|------|------|------|------|------|------|------|------|------|------|------|------|------|
| | | 24,0 | 26,0 | 28,0 | 31,7 | 34,0 | 36,7 | 40,0 | 43,3 | 46,0 | 48,3 | 52,0 | 55,0 | 58,0 | 60,0 | 62,0 | 65,0 | 68,0 | 70,0 |
| 70,0 (r = 71,36) | 2,4 - 24,3 10000 | 10000 | 9270 | 8520 | 7380 | 6800 | 6210 | 5600 | 5080 | 4710 | 4430 | 4030 | 3750 | 3500 | 3340 | 3200 | 3000 | 2810 | 2700 |
| 65,0 (r = 66,36) | 2,4 - 25,5 10000 | 10000 | 9790 | 9000 | 7800 | 7190 | 6570 | 5930 | 5390 | 5000 | 4710 | 4290 | 3990 | 3730 | 3560 | 3410 | 3200 | | |
| 60,0 (r = 61,36) | 2,4 - 22,3 12000 | 11060 | 10110 | 9290 | 8060 | 7430 | 6800 | 6140 | 5580 | 5180 | 4880 | 4450 | 4140 | 3870 | 3700 | | | | |
| 55,0 (r = 56,36) | 2,4 - 23,4 12000 | 11650 | 10660 | 9800 | 8510 | 7850 | 7190 | 6490 | 5910 | 5490 | 5170 | 4720 | 4400 | | | | | | |
| 48,3 (r = 49,70) | 2,4 - 24,2 12000 | 12000 | 11080 | 10200 | 8860 | 8180 | 7480 | 6770 | 6160 | 5730 | 5400 | | | | | | | | |
| 43,3 (r = 44,70) | 2,4 - 25,0 12000 | 12000 | 11480 | 10570 | 9190 | 8480 | 7770 | 7030 | 6400 | | | | | | | | | | |
| 36,7 (r = 38,00) | 2,4 - 25,6 12000 | 12000 | 11810 | 10870 | 9460 | 8730 | 8000 | | | | | | | | | | | | |
| 31,7 (r = 33,00) | 2,4 - 26,9 12000 | 12000 | 12000 | 11490 | 10000 | | | | | | | | | | | | | | |





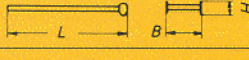
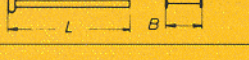
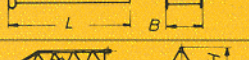




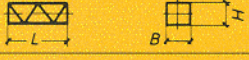
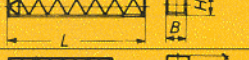
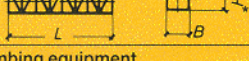





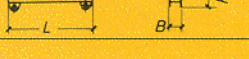

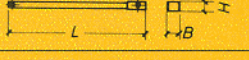

Geschwindigkeiten

Speeds

Vitesses

| | | |
|--|---------------------------------|---|
| | U/min 0,7 sl./min tr./min | 2 x 5,0 kW |
| | 8,0 / 16,0 / 50,0 / 95,0 m/min | 5,5 kW |
| | 25,0 m/min | 4 x 7,5 kW (500 HC, 355 HC) 2 x 7,5 kW (256 HC) |
| Anschlußwerte Kranoberteil Power requirement, upper part Puissance requise, partie supérieure | | Hubwerk Hoist gear Mécanisme de levage 61 kW |
| kW | | 76,5 |
| kVA | | 78,0 |

| Hubwerk Hoist gear Mécanisme de levage | Gang Gear Rapport | kg | m/min |
|--|-------------------------|-------|--------------|
| 61,0 kW WIW 270 RX 085 Elmag, WSB Hubhöhe 87,0 m Hoisting height Hauteur sous crochet | 1 | 12000 | 1,4 / 14,0 |
| | 2 | 5000 | 5,1 / 51,0 |
| | 3 | 2100 | 10,1 / 101,0 |

| Kranoberteil | | Upper part of crane Partie supérieure de grue | | L (m) | B (m) | H (m) | kg* | |
|---------------------------|---------------|--|---|--------------|------------------------------|-----------------------------|-----------------------------|--------------------------|
| Pos. Item Rep. | Anz. Qty. Qté | Drehbühne Slewing platform Ensemble mât-cabine |  | 256 HC | 6,24 | 2,74 | 2,57 | 9080 |
| 2 | 1 | Turmspitze Tower head Porte-flèche |  | | 8,88 | 1,64 | 1,80 | 2560 |
| 3 | 1 | Gegenausleger-Kopfstück Counter-jib head Pointe de contre-flèche |  | | 8,41 | 2,42 | 0,92 | 2720 |
| 4 | 1 | Gegenausleger-Anlenkstück Counter-jib heel section Pied de contre-flèche |  | | 8,44 | 1,77 | 0,92 | 2160 |
| 5 | 1 | Gegenausleger-Zwischenstück Intermediate counter-jib section Élément interm. de contre-flèche |  | | 5,22 | 1,76 | 0,92 | 1550 |
| 6 | 1 | Ausleger-Anlenkstück Jib heel section Pied de flèche |  | | 12,02 | 1,84 | 1,96 | 2980 |
| 7 | 3 | Ausleger-Zwischenstück Intermediate jib section Élément interm. de flèche |  | | 12,02 | 1,63 | 1,87 | 2210 |
| | 1 | | | | 5,36 | 1,63 | 1,87 | 925 |
| | 1 | | | | 7,03 | 1,63 | 1,87 | 1015 |
| | 1 | | | | 10,36 | 1,63 | 1,87 | 1864 |
| 8 | 1 | Ausleger-Kopfstück Jib head Pointe de flèche |  | | 2,21 | 1,84 | 2,05 | 330 |
| 9 | 1 | Laufkatze und Lasthaken Trolley and hook Chariot de distribution et crochet |  | | 1,89 | 1,83 | 1,20 | 960 |
| Turm | | Tower Mât | | | | | | |
| 10 | 9 | Turmstück Tower section Élément de mât |  | 256 HC | 4,14 | 2,30 | 2,30 | 2260 |
| | 11 | | | 355 HC | 6,28 | 2,45 | 2,45 | 5315 |
| | 13 | | | 500 HC | 6,28 | 2,45 | 2,45 | 6400 |
| 11 | 1 | Turmstück lang Long tower section Élément de mât long |  | 256 HC | 12,42 | 2,30 | 2,30 | 5520 |
| 12 | 1 | Grundturmstück Base tower section Mât de base |  | 256 HC | 8,85 (12,42) | 2,30 (2,30) | 2,30 (2,30) | 4580 (7700) |
| Klettereinrichtung | | Climbing equipment Équipement de télescopage | | | | | | |
| 13 | 1 | Führungstück kpl., geteilt Guide section cpl., split Cage télescopique cpl., dévisée |  | 256 HC | 8,39 | 2,80 | 2,50 | 5100 |
| | | | | 355 HC | 12,39 | 2,75 | 1,58 | 8300 |
| | | | | 500 HC | 12,39 | 2,75 | 1,58 | 8300 |
| 14 | 1 | Hydraulikanlage, Stütz- und Klettertraverse Hydraulic unit, supporting and climbing cross members Système hydraulique avec traverses d'appui et de télescopage | | 256 HC | 2,10 | 1,25 | 1,00 | 1150 |
| | | | | 355 HC | 2,10 | 1,10 | 1,00 | 1810 |
| | | | | 500 HC | 2,10 | 1,10 | 1,00 | 1810 |
| Unterwagen | | Undercarriage Châssis | | | | | | |
| 15 | 4 | Ausgleichsschwinge mit Schwingenlager Pivot for wheel box Chape pour bogie |  | 355 HC | | | | |
| | | | | 500 HC | 1,60 | 0,72 | 1,48 | 1390 |
| 16 | 2 | Fahrschemel mit Antrieb Driven bogie Bogie moteur |  | 256 HC | 1,63 (1,46) | 0,92 (0,84) | 0,95 (0,87) | 1450 (960) |
| | 4 | | | 355 HC | 1,40 | 0,75 | 0,65 | 780 |
| | 4 | | | 500 HC | 1,45 | 0,82 | 0,72 | 1060 |
| 17 | 2 | Fahrschemel ohne Antrieb Non-driven bogie Bogie fou |  | 256 HC | 1,37 (1,15) | 0,62 (0,60) | 0,95 (0,87) | 1120 (520) |
| | 4 | | | 355 HC | 1,10 | 0,60 | 0,65 | 340 |
| | 4 | | | 500 HC | 1,30 | 0,40 | 0,72 | 730 |
| 18 | 1 | Tragholm lang Long support arm Longeron long |  | 256 HC | 9,10 (11,95) | 0,80 (0,82) | 0,80 (0,80) | 1650 (2200) |
| | 1 | | | 355 HC | 11,82 | 0,92 | 0,93 | 3515 |
| | 2 | | | 500 HC | 7,32 | 0,92 | 0,93 | 2330 |
| 19 | 2 | Tragholm kurz Short support arm Longeron court |  | 256 HC | 4,45 (5,58) | 0,77 (0,65) | 0,77 (0,77) | 800 (1035) |
| | | | | 355 HC | 5,74 | 0,80 | 0,90 | 1600 |
| | | | | 500 HC | 7,14 | 0,80 | 0,90 | 2135 |
| 20 | 2 + 2 | Randträger Border support Traverse |  | 256 HC | 5,46 - 5,40 (7,52 - 7,46) | 0,11 - 0,18 (0,1 - 0,17) | 0,16 - 0,38 (0,1 - 0,38) | 175 - 525 (366 - 912) |
| | | | | 355 HC | 7,30 | 0,14 | 0,14 | 340 |
| | | | | 500 HC | 9,30 | 0,14 | 0,14 | 510 |
| 21 | 4 | Stützholm Support strut Hauban de châssis |  | 256 HC | 4,14 (6,55) | 0,18 (0,22) | 0,25 (0,25) | 320 (600) |
| | | | | 355 HC | 6,06 | 0,26 | 0,34 | 862 |
| | | | | 500 HC | 6,98 | 0,26 | 0,34 | 1140 |
| 22 | 1 | Unterwagen-Turmstück Undercarriage tower section Mât de châssis |  | 256 HC | 3,73 (6,70) | 2,62 (2,53) | 2,62 (2,53) | 2550 (3800) |
| | | | | 355 HC | 6,61 | 2,44 | 2,44 | 7475 |
| | | | | 500 HC | 6,61 | 2,44 | 2,44 | 7930 |
| 23 | | Kleinteile, Seile und Abspannungen Small parts, ropes and holding bars Accessoires, câbles et tirants | | 256 HC | | | | |
| | | | | 355 HC | 9,00 | 1,60 | 1,00 | 5000 |
| | | | | 500 HC | | | | |

(*) Angaben in Klammern gelten für 8 m-Unterwagen. / The data in brackets are valid for an undercarriage of 8 m. / Les données techniques indiquées entre parenthèses sont valables pour un châssis de 8 m.

* Einzelgewichte. Montagegewichte: siehe Betriebsanweisung. / Single weights. Erection weights: see instruction manual. / Poids individuels. Poids de montage: voir manuel de service.